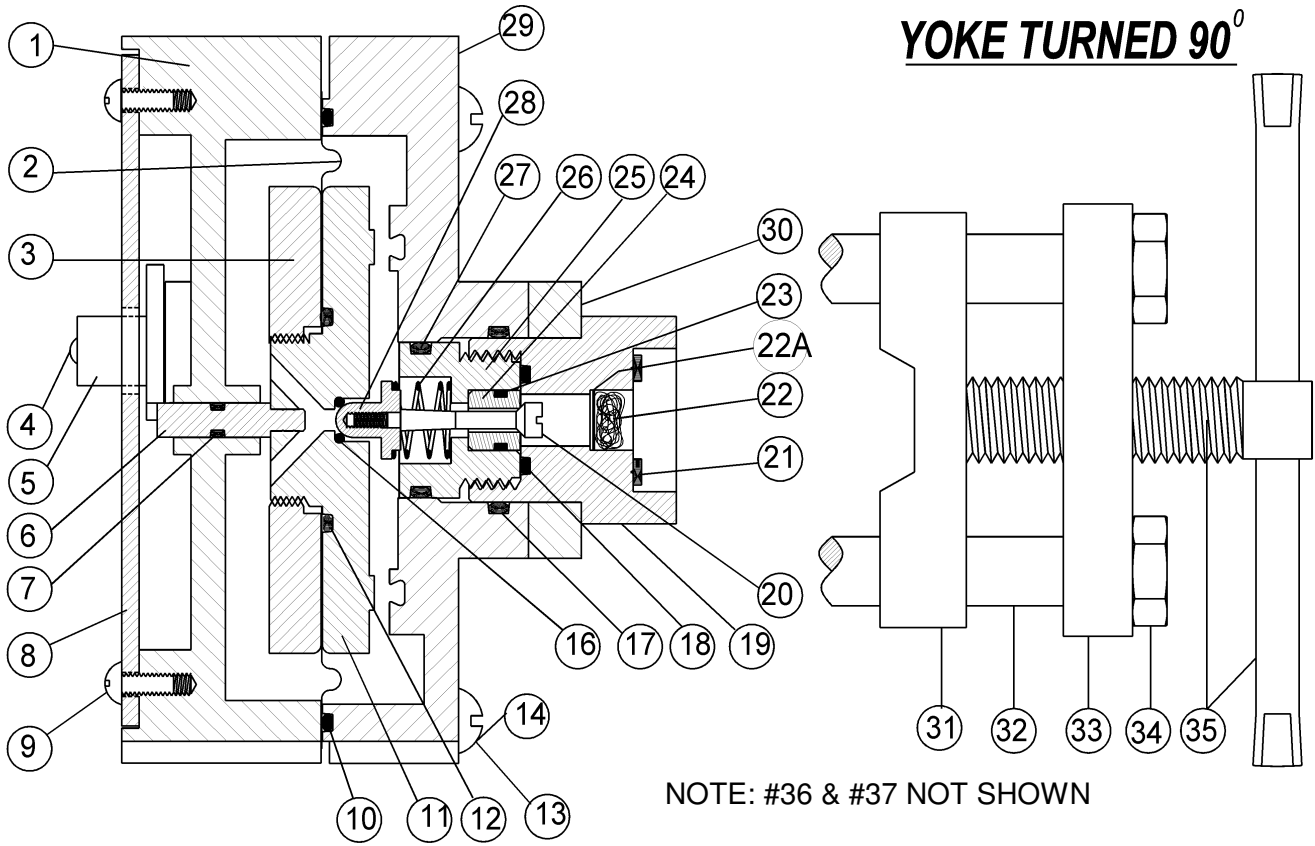



YOKE TURNED 90°



NOTE: #36 & #37 NOT SHOWN

REF NO.	QTY	DESCRIPTION	PART NO.	REF NO.	QTY	DESCRIPTION	PART NO.
1	1	VACUUM REGULATOR FRONT BODY	VR-120	21	10	LEAD GASKET	GK-150
2	1	VACUUM REGULATOR DIAPHRAGM	VR-130	22	1	FILTER - FIBERGLASS	YK-168
3	1	DIAPHRAGM FRONT PLATE	VR-150	22A	1	FILTER SUPPORT	YK-167
4	1	LOSS OF CL ₂ INDICATOR SCREW	VR-169	23	1	INLET VALVE SEAT O-RING	OR-115
5	1	LOSS OF CL ₂ INDICATOR FLAG	VR-167	24	1	INLET VALVE SEAT	IV-911
6	1	INDICATOR PIN	VR-160*	25	1	INLET ADAPTOR PLUG	IV-920
7	1	INDICATOR O-RING	OR-101	26	1	INLET SPRING	IV-160
8	1	CHLORINATOR FACEPLATE	VR-180	27	1	INLET ADAPTOR PLUG O.D. O-RING	OR-106
9	2	FACEPLATE SCREW	VR-185	28	1	INLET SPRING GUIDE/VENT PLUG	IV-945
10	1	DIAPHRAGM BODY O-RING	OR-108	29	1	VACUUM REGULATOR BACK BODY, UP TO 2000 PPD (40 KG/HR)	VR-910
11	1	DIAPHRAGM BACK PLATE	VR-140*	30	1	YOKE BODY BAR	YK-100*
12	1	DIAPHRAGM PLATE O-RING	OR-107	31	1	YOKE SLIDE BAR	YK-130
13	2	VAC. REGULATOR BODY/YOKE BOLT	VR-170	32	2	YOKE STUD	YK-120*
14	4	VAC. REGULATOR BODY BOLT	VR-171	33	1	YOKE ROD BAR	YK-112
				34	2	YOKE JAM NUT	YK-110
16	1	VENT O-RING	OR-110	35	1	YOKE SCREW/HANDLE	YK-160
17	1	SECONDARY INLET SAFETY O-RING	OR-113	36	1	1" NPT X 1" NPT, PVC UNION WITH VITON O-RING SEAL	TU-950
18	1	RATE VALVE SEAT/ADAPTOR FACE O-	OR-103	37	1	3/8" VENT TUBE FITTING	TU-150
19	1	INLET ADAPTOR	YK-950				
20	1	INLET VALVE PLUG	IV-930				
*NOTE: VR-160 AND VR-140 ARE ASSEMBLED AS VR-141				**NOTE: YK-100 AND YK-120 ARE ASSEMBLED AS YK-115			



 CHEMICAL INJECTION TECHNOLOGIES	
VACUUM REGULATOR PARTS LIST MODELS CL-10, CL-20	
BY: HPS	DATE: 22 MAY '97'
SCALE: NTS	DWG NO: VR-10