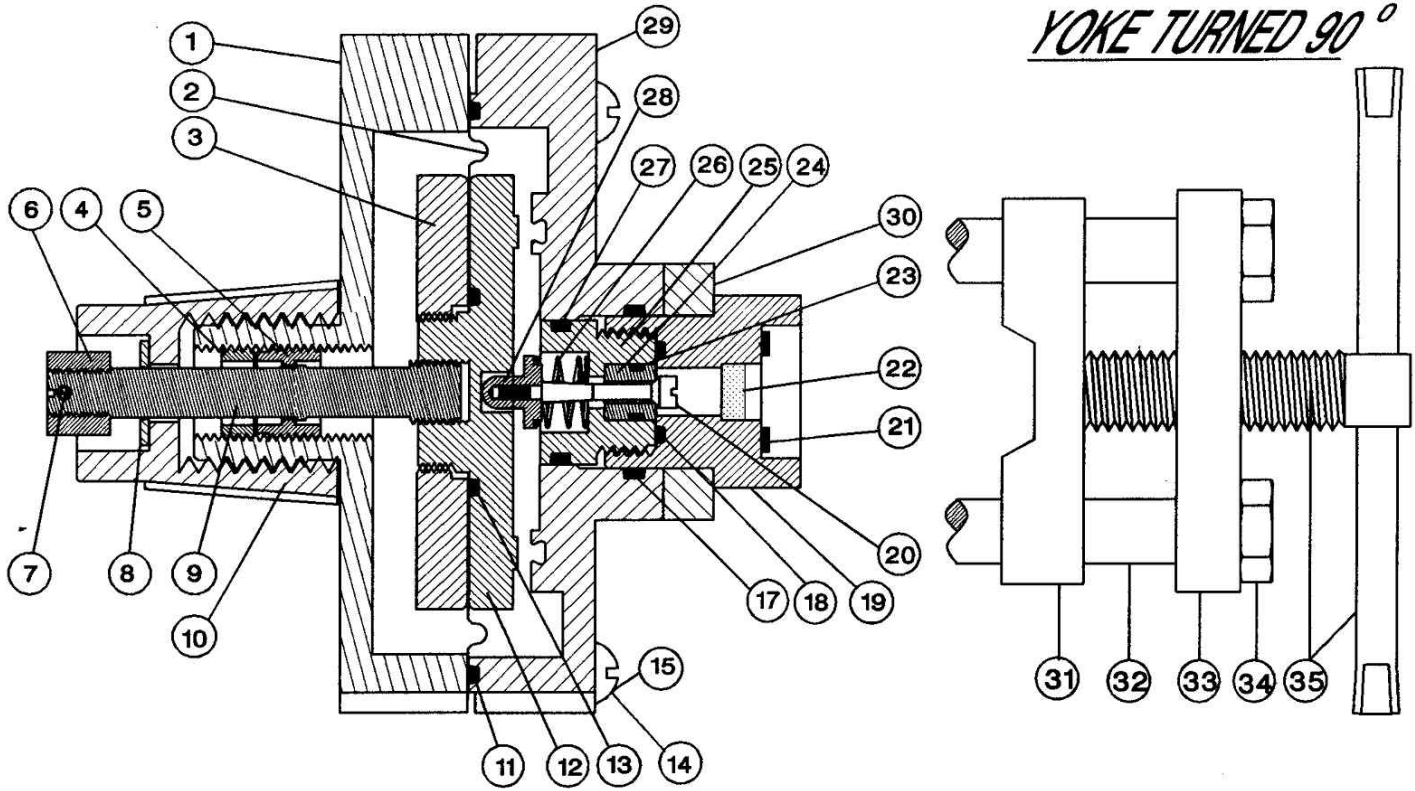


YOKE TURNED 90°



REF NO.	QTY	DESCRIPTION	PART NO.	REF NO.	QTY	DESCRIPTION	PART NO.
1	1	VACUUM REGULATOR FRONT BODY	VR-126	21	10	LEAD GASKET	GK-150
2	1	VACUUM REGULATOR DIAPHRAGM	VR-131	22	1	FILTER	YK-165
3	1	DIAPHRAGM FRONT PLATE	VR-150	23	1	INLET VALVE SEAT O-RING	OR-104
4	1	S/O POPPET RETAINER LOCKING RING	SP-139	24	1	INLET VALVE SEAT	IV-110
5	1	SWITCHOVER POPPET RETAINER	SP-137	25	1	INLET ADAPTOR PLUG	IV-120
6	1	LOCKING NUT	SP-165	26	1	INLET SPRING	IV-160
7	1	LOCKING PIN	SP-168	27	1	INLET ADAPTOR PLUG O.D. O-RING	OR-106
8	1	FRICTION WASHER - TEFLON	SP-160	28	1	INLET SPRING GUIDE/VENT PLUG	IV-145
9	1	SWITCHOVER POPPET SHAFT	SP-145*	29	1	BACK BODY, UP TO 200 PPD (5 KG/HR)	VR-110
10	1	SWITCHOVER RESET KNOB	SP-134			BACK BODY, UP TO 500 PPD (10 KG/HR)	VR-510
11	1	DIAPHRAGM BODY O-RING	OR-108	30	1	YOKE BODY BAR	YK-100*
12	1	DIAPHRAGM BACK PLATE	VR-143*	31	1	YOKE SLIDE BAR	YK-130
13	1	DIAPHRAGM PLATE O-RING	OR-107	32	2	YOKE STUD	YK-120*
14	2	VAC. REGULATOR BODY/YOKE BOLT	VR-170	33	1	YOKE ROD BAR	YK-112
15	4	VAC. REGULATOR BODY BOLT	VR-171	34	2	YOKE JAM NUT	YK-110
17	1	SECONDARY INLET SAFETY O-RING	OR-113	35	2	YOKE SCREW/HANDLE	YK-160
18	1	RATE VLV SEAT/ADAPTOR FACE O-RING	OR-103	36	1	TUBE FITTING, 100 PPD (2000 GR/HR)	TU-150
19	1	INLET ADAPTOR	YK-150			TUBE FITTING, 200 PPD (5 KG/HR)	TU-250
20	1	INLET VALVE PLUG	IV-130			TUBE FITTING, 500 PPD (10 KG/HR)	TU-550
*NOTE: SP-145 AND VR-143 ARE ASSEMBLED AS VR-146				**NOTE: YK-100 AND YK-120 ARE ASSEMBLED AS YK-115			

	CHEMICAL INJECTION TECHNOLOGIES	
	AUTO-SWITCHOVER VACUUM REGULATOR MODEL VR-16, VR-26, VR-56	
BY: HPS	DATE: 1 OCT '05	
SCALE: NTS	DWG NO: VR-16	

**VR-16 / 26 / 56
VACUUM
REGULATOR**

